

# 广东耀达房屋科技股份有限公司

耀达房屋科技集团始创于一九九五年，今已有21年辉煌历史。

发展至今已成为中国轻钢集成房屋

行业的领航企业和中国活动房屋最具影响力的品牌。

多年来开发及自主研发项目数十个获得

多个科技创新产品和国家发明专利产品。集团产品类型多样，

从轻钢结构配件，板材到活动房屋、

集装箱式房屋、轻钢别墅等轻钢结构的房屋体系一应俱全。

集团拥有5万平方米的生产基地，年生产

钢结构民用和工业用建筑30万㎡，板材20万㎡。引进现代化工业自动生产

设备后集团旗下员工有400多人，其中中高级技工100多人，

专业的安装队100多人，年生产与安装活动房屋20万㎡以上。产品销往国内多个省

市及出口亚洲、非洲、南美洲、中东、大洋洲等100多个国家与地区

Yaoda Housing Technology Group was founded in 1995. Until 2015 it already has consecutive 20 glorious years, which has made itself become the leader in the professional compact light-steel houses industry and its brand is recognized as one of the most popular ones in China simultaneously. With unceasing effort in developing and upgrading dozens of product types and technologies over the years, the group has obtained lots of National Patents with respect innovation and technology. In the other words, Yaoda can provide full range of light-steel construction housing products, like light-steel fittings, building boards, mobile houses, container houses, light-steel villa and chalet houses, etc.

The group has 50,000 square meters of production base, equipped with many self-developed modern automatic production lines. Its annual output for civil and industrial construction is 300,000 m<sup>2</sup>, while for steel plates is around 200,000 m<sup>2</sup>. At he meantime, the group owns approximately 400 employees, including more than 100 senior technicians and a professional installation team of over hundred people. And the products are sold to the domestic market into various provinces /cities and exported to more than 100 countries and regions in Asia, Africa, South America, Middle East as well as Oceania.



## 广东耀达房屋科技股份有限公司

GUANGDONG YAODA HOUSE TECHNOLOGY CO.,LTD

地址：广东省佛山市南海区丹灶镇桂丹西路58号

Add: No.58,GuiDan Xi Road,Danzao Town,

NanHai zone,Foshan City Guangdong Province China

业务热线/Mob: +86-13889934567

电话/Tel: +86-757-82706933

传真/Fax: +86-757-82700609

邮箱/E-mail: marketing@yaodaprefab.com

Http://www.chinaprefabhouse.com

Http://www.fsyada.com

TECHNOLOGY  
HOUSE

SINCE IN  
1995



耀达房屋科技

YAODA HOUSE TECHNOLOGY

轻钢别墅·集装箱房·活动房屋·钢结构

BY TELEPHONE:

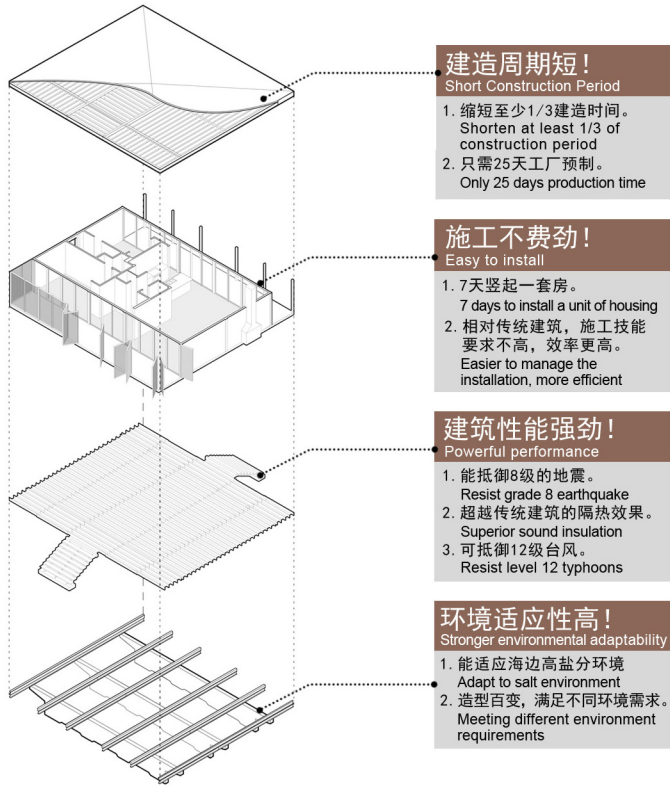
+86-0757-82706933

GUANGDONG FOSHAN

WWW.FSYAODA.COM



## PRODUCT FEATURES 产品特点



**建造周期短!**  
Short Construction Period

1. 缩短至少1/3建造时间。  
Shorten at least 1/3 of construction period
2. 只需25天工厂预制。  
Only 25 days production time

**施工不费劲!**  
Easy to install

1. 7天竖起一套房。  
7 days to install a unit of housing
2. 相对传统建筑, 施工技能要求不高, 效率更高。  
Easier to manage the installation, more efficient

**建筑性能强劲!**  
Powerful performance

1. 能抵御8级的地震。  
Resist grade 8 earthquake
2. 超越传统建筑的隔热效果。  
Superior sound insulation
3. 可抵御12级台风。  
Resist level 12 typhoons

**环境适应性高!**  
Stronger environmental adaptability

1. 能适应海边高盐分环境  
Adapt to salt environment
2. 造型百变, 满足不同环境需求。  
Meeting different environment requirements



## PRODUCT CERTIFICATION 权威认证



Practical patent certificate    ISO9001    CE Certificate    U.N.Supplier    Practical patent certificate

## SERVICE MODE 服务模式



业务洽谈  
Negotiating

方案设计  
Designing

工厂预制  
Producing

部件运输  
Transporting



交匙入住  
Living



装饰施工  
Decoration processing



墙体围蔽  
Wallboard covering



钢构搭建  
Setting up

## CONSTRUCTION SITE 建造实况

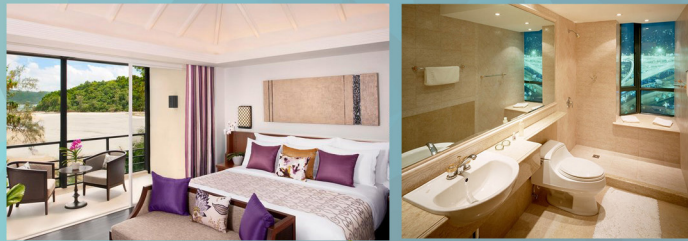


建筑方案由设计到部件加工完成实行工厂预制, 大大减少了现场作业时间及减少对环境的破坏。从业经验丰富的项目经理领衔各项技术人才, 组成适合项目的对应小组, 全程紧跟项目进度, 确保项目的生产及建造。

The design of the building is completed from the design to the parts, and prefabricated in factory, which greatly reduces the operation time and reduces the damage to the environment. Experienced projects lead technical personnel to follow whole project process, which could sure the production and construction.

## 度假专享---“珑景”度假屋

Exclusive for holiday --- Long jin Villa



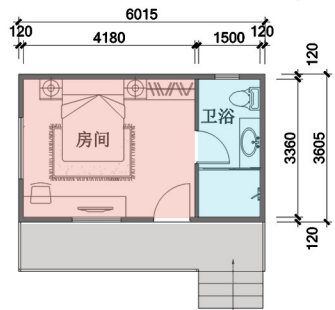
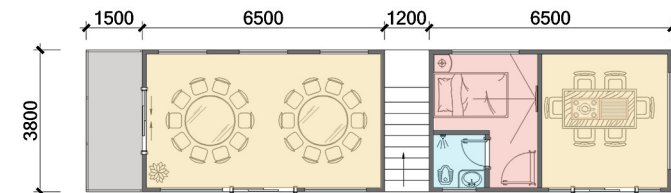
## 营地专享---“博涛”度假屋

Exclusive for camp --- Botao villa

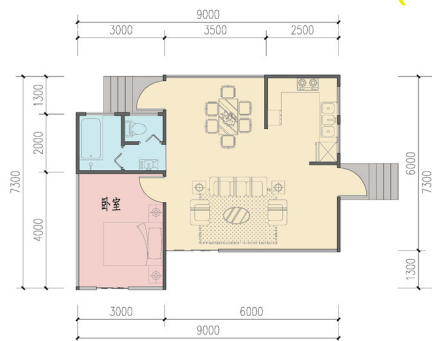


## 创意专享---“厢栖”集装箱改造

Exclusive for creation --- container



建筑面积/Area	37.0m <sup>2</sup>
房间/Bedroom	14.1m <sup>2</sup>
卫浴间/Washroom	5.1m <sup>2</sup>
阳台/Balcony	15m <sup>2</sup>
“珑景”以精致的空间，环境，台地结构尽量减少环境破坏，更空间融入环境。 Long jin villa is famous for combination with space and enviorment. And terrace can avoid to damage local place.	

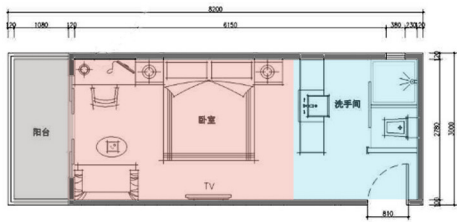


建筑面积/Area	54.0m <sup>2</sup>
房间/Bedroom	12.0m <sup>2</sup>
卫浴间/Washroom	6.0m <sup>2</sup>
客厅/Livingroom	36m <sup>2</sup>
作为海边小屋，“博涛”以居所作为出发点，设置完善的生活思考，务求使用者在此找到属于他的海岸。 Botao villa is aim to help customer find a beach that belong to himself, from the residence.	

拼箱面积/Area	59.7m <sup>2</sup>	单箱面积/Unit Container	24.7m <sup>2</sup>
接待面积/Reception	24.7m <sup>2</sup>	“箱栖”集装箱改造，以独特的肌理感，深受创意者的喜爱。 Container reformation is popular with customer for unique design.	
套房面积/Bedroom	11.4m <sup>2</sup>		
餐厅面积/Kitchen	13.3m <sup>2</sup>		

## 休闲专享---“锦致”小别墅

Exclusive for relaxation --- Jin zhi villa



建筑面积/Area	25.4m <sup>2</sup>
房间/Bedroom	10.5m <sup>2</sup>
卫浴间/Washroom	7.5m <sup>2</sup>
阳台/Balcony	4.8m <sup>2</sup>

“锦致”小别墅享受落地全幅景致，在山丘上，在海岸旁，独领风光。  
Jin Zhi Villa be set up in the moutain, beside the seacoast Closing the nature. Enjoying your life.

## 写意专享---“露芒”居舍

Exclusive for impression --- Lumang Villa



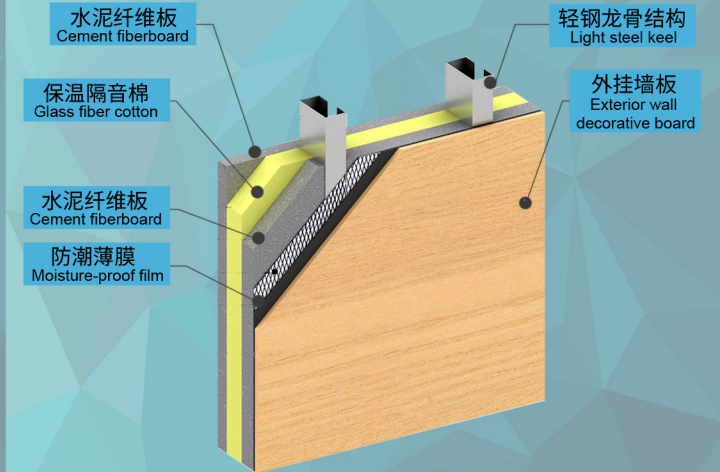
建筑面积/Area	78.3m <sup>2</sup>
房间/Bedroom	28.2m <sup>2</sup>
卫浴间/Washroom	15m <sup>2</sup>
客厅/Livingroom	25m <sup>2</sup>

一屋双户设计，适合家庭或朋友间旅游短住。岸边垂钓，落日闲游，写意人生。  
Separate rooms style is suitable for short rental living with family/ friends. Fishing beside the shore. Taking a walk when the sunset... Happiness and Peace Life..



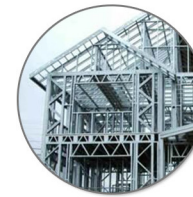
### · 墙板结构参考 ·

Panel structure reference



### · 安装结构体系 ·

Installation structure system



轻钢薄壁体系  
Light Steel System



箱式房屋体系  
Container Housing System



板式房屋体系  
Module Housing System